



## NIPPLI - TAPPI - RESCHE

NIPPLES - PLUGS - HOSE END  
MAMELONS - BOUCHONS - DOUILLE CONNELEE  
NIPPEL - STOPFEN - VERBINDER

pag R2

## RACCORDI STANDARD

STANDARD FITTINGS  
RACCORDS STANDARD  
STANDARD VERSCHRAUBUNG

pag R9

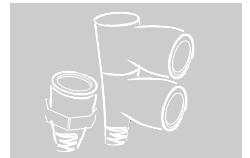
## SILENZIATORI

SILENCERS  
SILENCIEUX  
SCHALLDÄMPFER

pag R13

## RACCORDERIA

FITTINGS  
RACCORDS  
STECKANSCHLÜSSE



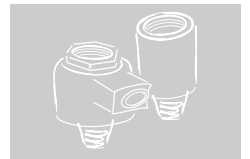
## REGOLATORI DI VELOCITA'

FLOW REGULATORS  
REGULATEURS DE DEBIT  
DROSSELVERSCHRAUBUNG



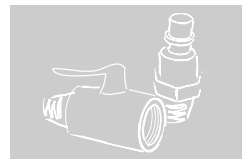
## VALVOLE PNEUMATICHE

PNEUMATIC VALVES  
BLOQUEURS PNEUMATIQUES  
PNEUMATIK- VENTILE



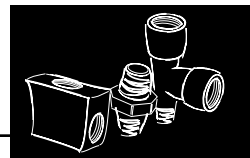
## RUBINETTI

COUPLINGS  
COUPLEURS  
KUPPLUNG



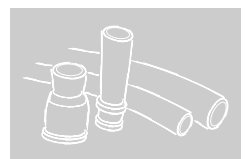
## PARTICOLARI DI COLLEGAMENTO

CONNECTION PARTS  
PIÈCES DE LIAISON  
VERSCHRAUBUNGSTEILE



## ACCESSORI

ACCESSORIES  
ACCESSOIRES  
ZUBEHÖR





## SCHEDA TECNICA

SPECIFICATION SHEET - FICHE TECHNIQUE - TECHNISCHES BLATT

### MATERIALI DI COSTRUZIONE

OTTONE (EN 12164-CW614N) NICHELATO  
ZAMA-15 (UNI 3717) NICHELATA  
ALLUMINIO  
GUARNIZIONI IN GOMMA ANTIOLIO NBR  
PRESSIONE MAX D'ESERCIZIO: 16 BAR (1,6 MPa)  
TEMPERATURA DI LAVORO: -10°C (263°K), +80°C (353°K)

### MATERIALS OF CONSTRUCTION

NICKEL-PLATED BRASS (EN 12164-CW614N)  
NICKEL-PLATED ZAMA-15 (UNI 3717)  
ALUMINIUM  
OIL-PROOF RUBBER PACKINGS NBR  
MAX WORKING PRESSURE: 16 BAR (1,6 MPa)  
WORKING TEMPERATURE: -10°C (263°K), +80°C (353°K)

### MATERIEL DE FABRICATION

LAITON (EN 12164-CW614N) NICKELE  
ZAMA-15 (UNI 3717) NICKELEE  
ALUMINIUM  
JOINTS EN CAOUTCHOUC ANTI-HUILE NBR  
PRESSION MAXI D'EXERCICE: 16 BAR (1,6 MPa)  
TEMPERATURE DE TRAVAIL: -10°C (263°K), +80°C (353°K)

### HERSTELLUNGSMATERIAL

MESSING (EN 12164-CW614N), VERNICKELT  
ZAMAK-15 (UNI 3717), VERNICKELT  
ALUMINIUM  
DICHTUNGEN NBR, ÖLBESTÄNDIG  
HÖCHSTBETRIEBSDRUCK: 16 BAR (1,6 MPa)  
BETRIEBSTEMPERATUREN: -10°C (263°K), +80°C (353°K)



### O-RING/GUARNIZIONI

OIL-PROOF RUBBER  
JOINTS  
DICHTUNGEN

ESENTI DA SILICONE  
SILICONE FREE  
LIBRES DE SILICONE  
SILIKONFREI

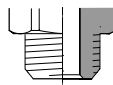


### O-RING SPECIALI A RICHIESTA

SPECIAL O-RINGS ON REQUEST  
JOINTS SPECIAUX SUR DEMANDE  
ANDERE DICHTUNGEN AUF ANFRAGE

### ATTACCO FILETTATO

THREADED CONNECTOR  
CONNEXION FILETÉE  
GEWINDEANSCHLUSS



FILETTO CILINDRICO/METRICO  
PARALLEL/METRIC THREAD  
FILET CYLINDRIQUE/METRIQUE  
ZYLINDRISCHES/METRISCHES GEWINDE  
UNI-ISO 228/1 - UNI 5542-65



FILETTO CONICO  
TAPERED THREAD  
FILET CONIQUE  
KONISCHES GEWINDE  
UNI-ISO 7/1



FILETTO CILINDRICO FEMMINA  
FEMALE PARALLEL THREAD  
FILET CYLINDRIQUE FEMELLE  
ZYLINDRISCHES INNENGEWINDE  
UNI-ISO 228/1

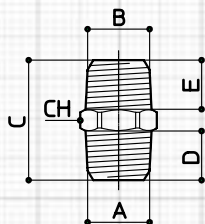
INFORMAZIONI SULLA CODIFICA ARTICOLI: vedi pag 14÷16  
INFORMATION ABOUT THE ITEMS CODING: see pages 14-16  
RENSEIGNEMENTS SUR LA CODIFICATION DES ARTICLES: voir aux pages 14-16  
BESTELLSYSTEM: siehe seite 14-16



## S10

### NIPPLO CONICO

TAPERED NIPPLE  
MAMELON CONIQUE  
DOPPELNIPPEL

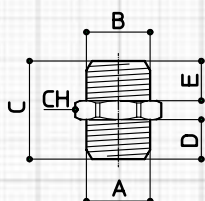


CODICE	A	B	C	D	E	F	G	CH	CH1	Gr
S10880	1/8	1/8	21	8	8			12		9
S10840	1/8	1/4	23	8	10			14		13
S10830	1/8	3/8	25	8	11			17		21
S10440	1/4	1/4	25	10	10			14		15
S10430	1/4	3/8	27	10	11			17		24
S10420	1/4	1/2	30	10	14			22		35
S10330	3/8	3/8	28	11	11			17		25
S10320	3/8	1/2	31	11	14			22		38
S10220	1/2	1/2	34	14	14			22		42
S10270	1/2	3/4	37	14	16,5			27		69
S10770	3/4	3/4	39,5	16,5	16,5			27		79
S10710	3/4	1"	42,5	16,5	19			34		111
S10110	1"	1"	45	19	19			34		128

## S11

### NIPPLO CILINDRICO

PARALLEL NIPPLE  
MAMELON CYLINDRIQUE  
DOPPELNIPPEL

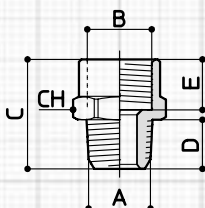


CODICE	A	B	C	D	E	F	G	CH	CH1	Gr
S11580	M5	1/8	14,5	4	6			14		8
S11880	1/8	1/8	17	6	6			14		10
S11840	1/8	1/4	19	6	8			17		15
S11830	1/8	3/8	22	6	10			20		24
S11440	1/4	1/4	21	8	8			17		17
S11430	1/4	3/8	24	8	10			20		25
S11420	1/4	1/2	26	8	12			24		34
S11330	3/8	3/8	26	10	10			20		28
S11320	3/8	1/2	28	10	12			24		35
S11220	1/2	1/2	30	12	12			24		40
S11270	1/2	3/4	27,5	10	11			30		66
S11770	3/4	3/4	28,5	11	11			30		80

## S12

### PROLUNGA CONICA

TAPERED EXTENSION  
RALLONGE CONIQUE  
GERADER ÜBERGANGSTÜTZEN

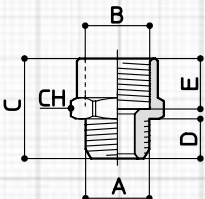


CODICE	A	B	C	D	E	F	G	CH	CH1	Gr
S12880	1/8	1/8	20	8	8			14		12
S12840	1/8	1/4	23	8	10			17		18
S12830	1/8	3/8	23	8	11			22		26
S12480	1/4	1/8	23	10	8			17		19
S12440	1/4	1/4	24	10	10			17		19
S12430	1/4	3/8	25	10	11			22		32
S12420	1/4	1/2	29	10	13			24		34
S12340	3/8	1/4	25	11	10			22		35
S12330	3/8	3/8	27	11	11			22		33
S12320	3/8	1/2	30	11	13			26		47
S12230	1/2	3/8	32	14	11			22		45
S12220	1/2	1/2	33	14	13			26		52
S12270	1/2	3/4	35	14	16,5			32		83

## S13

### PROLUNGA CILINDRICA

PARALLEL EXTENSION  
RALLONGE CYLINDRIQUE  
GERADER ÜBERGANGSTÜTZEN

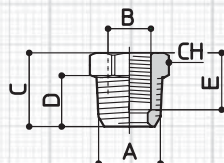


CODICE	A	B	C	D	E	F	G	CH	CH1	Gr
S13580	M5	1/8	14,5	4	8			14		9
S13880	1/8	1/8	18	6	8			14		12
S13840	1/8	1/4	21	6	10			17		17
S13480	1/4	1/8	21	8	8			17		18
S13440	1/4	1/4	22	8	10			17		19
S13430	1/4	3/8	24	8	11			22		31
S13340	3/8	1/4	24	10	10			22		31
S13330	3/8	3/8	26	10	11			22		35
S13320	3/8	1/2	28	10	13			26		42
S13230	1/2	3/8	30	12	11			26		48
S13220	1/2	1/2	31	12	13			26		50



## S14

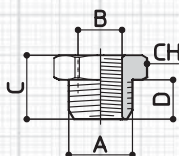
RI DUZIONE CONI CA  
TAPERED REDUCTION  
REDUCTION CONIQUE  
KEGELFORMIGE REDUZIERUNG



CODICE	A	B	C	D	E	F	G	CH	CH1	Gr
S14850	1/8	M5	12	8	6			12		7
S14480	1/4	1/8	14	10	10			14		9
S14380	3/8	1/8	17	11	11			17		20
S14340	3/8	1/4	17	11	10			17		13
S14280	1/2	1/8	19,5	14	8			22		30
S14240	1/2	1/4	22	14	12			22		35
S14230	1/2	3/8	22	14	12			22		23
S14730	3/4	3/8	23	16,5	11,5			27		67
S14720	3/4	1/2	23	16,5	14			27		52

## S15

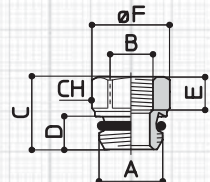
RI DUZIONE CILINDRICA  
CYLINDRICAL REDUCTION  
REDUCTION CYLINDRIQUE  
ZYLINDRISCHE REDUZIERUNG



CODICE	A	B	C	D	E	F	G	CH	CH1	Gr
S15850	1/8	M5	11	6				14		9
S15480	1/4	1/8	13	8				17		11
S15380	3/8	1/8	16	10				22		29
S15340	3/8	1/4	16	10				22		21
S15280	1/2	1/8	15,5	10				24		35
S15240	1/2	1/4	19	12				26		45
S15230	1/2	3/8	19	12				26		32
S15730	3/4	3/8	17,5	11				30		55
S15720	3/4	1/2	17,5	11				30		41

## S15

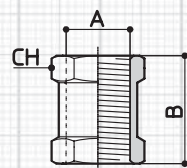
RI DUZIONE CILINDRICA+O-RING  
CYLINDRICAL REDUCTION+O-RING  
REDUCTION CYLINDRIQUE+O-RING  
ZYLINDRISCHE REDUZIERUNG+O-RING



CODICE	A	B	C	D	E	F	G	CH	CH1	Gr
S15487	1/4	1/8	13,5	6	6	15,7		14		9
S15347	3/8	1/4	20	8	8,5	20		18		22
S15247	1/2	1/4	10	9	10	24		22		34
S15237	1/2	3/8	23,5	9	10	24		22		37

## S16

MANI COTTO  
SLEEVE  
MANCHON  
MUFFE



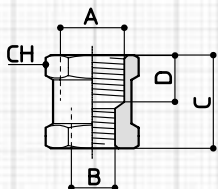
CODICE	A	B	C	D	E??	F	G	CH	CH1	Gr
S16050	M5	11						8		3
S16080	1/8	18						14		12
S16040	1/4	22						17		19
S16030	3/8	26						22		35
S16020	1/2	30						26		55
S16070	3/4	33						32		80



## S17

### MANICOTTO RIDUZIONE

REDUCTION SLEEVE  
MANCHON REDUCTION  
REDUZIERMUFFE

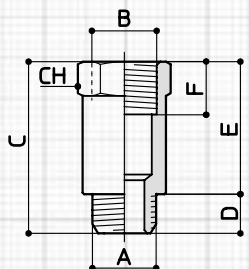


CODICE	A	B	C	D	E	F	G	CH	CH1	Gr
<b>S17850</b>	1/8	M5	13,5	8				14		9
<b>S17480</b>	1/4	1/8	19	10				17		21
<b>S17380</b>	3/8	1/8	20	12				22		40
<b>S17340</b>	3/8	1/4	23	12				22		37
<b>S17240</b>	1/2	1/4	25	14				26		63
<b>S17230</b>	1/2	3/8	28	14				26		65
<b>S17720</b>	3/4	1/2	30	16,5				32		79

## S18

### PROLUNGA CILINDRICA

CYLINDRICAL EXTENSION  
RALLONGE CYLINDRIQUE  
ZYLINDRISCHE VERLÄNGERUNG

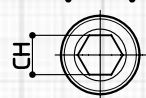
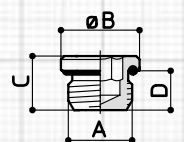
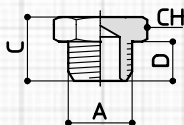


CODICE	A	B	C	D	E	F	G	CH	CH1	Gr
<b>S18816</b>	1/8	1/8	22	6	16	8		14		18
<b>S18836</b>	1/8	1/8	42	6	36	8		14		36
<b>S18427</b>	1/4	1/4	35	8	27	10		17		36
<b>S18443</b>	1/4	1/4	51	8	43	10		17		69

## S19

### TAPPO CILINDRICO

CYLINDRICAL PLUG  
BOUCHON CYLINDRIQUE  
MESSING-STOPFEN MIT AUSSENSECHSKANT



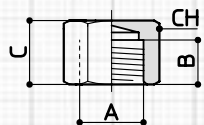
CODICE	A	B	C	D	E	F	G	CH	CH1	Gr
<b>S19050</b>	M5		7,5	4				8		2
<b>S19080</b>	1/8		11	6				14		9
<b>S19040</b>	1/4		13	8				17		13
<b>S19030</b>	3/8		15	10				19		22
<b>S19020</b>	1/2		16	10				24		36
<b>S19070</b>	3/4		16,5	11				30		50
<b>S19010</b>	1"		19	13				38		79

<b>S19058</b>	M5	8	6	4				2,5		1
<b>S19088</b>	1/8	13	9	6				6		4
<b>S19048</b>	1/4	16	11	8				8		8
<b>S19038</b>	3/8	20	14	10				10		15
<b>S19028</b>	1/2	25	16	12				12		30

## S20

### TAPPO FEMMINA

FEMALE PLUG  
BOUCHON FEMELLE  
VERSCHLUSS KAPPE

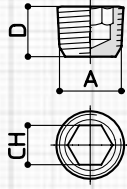


CODICE	A	B	C	D	E	F	G	CH	CH1	Gr
<b>S20080</b>	1/8	12	12					13		10
<b>S20040</b>	1/4	13	13,5					17		16
<b>S20030</b>	3/8	16	16					21		28
<b>S20020</b>	1/2	18	18					26		47



## S25

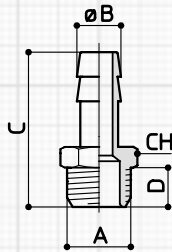
**TAPPO CONICO CON BRUGOLA**  
 TAPERED PLUG WITH SOCKET HEAD SCREW  
 BOUCHON CONIQUE AVEC 6 PANS CREUX  
 STOPFEN MIT INNENSECHSKANT, KONISCH



CODICE	A	B	C	D	E	F	G	CH	CH1	Gr
S25080	1/8			7,5				5		3
S25040	1/4			10				6		7
S25030	3/8			11				8		13
S25020	1/2			13				10		26

## S21

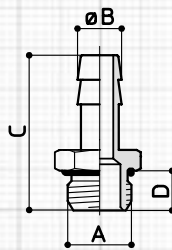
**RESCA PORTAGOMMA CILINDRICA**  
 PARALLEL HOSE TAIL  
 DOUILLE CONNELEE CYLINDRIQUE  
 EINSCHRAUBTÜLLE, ZYLINDRISCH



CODICE	A	B	C	D	E	F	G	CH	CH1	Gr
S21086	1/8	6	29,5	6				12		9
S21087	1/8	7	29,5	6				12		9
S21088	1/8	8	29,5	6				12		10
S21089	1/8	9	29,5	6				12		10
S21081	1/8	10	30,5	6				12		11
S21046	1/4	6	32	8				14		12
S21047	1/4	7	31,5	8				14		13
S21048	1/4	8	32,5	8				14		14
S21049	1/4	9	31,5	8				14		14
S21041	1/4	10	32,5	8				14		15
S21042	1/4	12	32,5	8				14		16
S21044	1/4	14	43	9				15		28
S21038	3/8	8	34	9				19		24
S21039	3/8	9	34	9				19		25
S21031	3/8	10	34	9				19		24
S21032	3/8	12	34	9				19		24
S21034	3/8	14	34	9				19		25
S21037	3/8	17	38,5	9				19		29
S21022	1/2	12	36	10				22		30
S21024	1/2	14	37,5	10				22		34
S21027	1/2	17	39,5	10				22		37
S21220	1/2	20	39,5	10				22		40
S21718	3/4	18	41	11				30		55
S21720	3/4	20	42	11				30		58

## S26

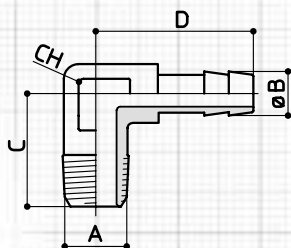
**RESCA PORTAGOMMA CILINDRICA+OR**  
 PARALLEL HOSE TAIL+OR  
 DOUILLE CONNELEE CYLINDRIQUE+OR  
 EINSCHRAUBTÜLLE, ZYLINDRISCH MIT O- RING



CODICE	A	B	C	D	E	F	G	CH	CH1	Gr
S26086	1/8	6	29,5	6				14		10
S26087	1/8	7	29,5	6				14		12
S26088	1/8	8	29,5	6				14		11
S26089	1/8	9	29,5	6				14		13
S26046	1/4	6	32	8				17		15
S26047	1/4	7	32	8				17		16
S26049	1/4	9	32	8				17		16
S26042	1/4	12	33	8				17		19
S26039	3/8	9	33	9				20		22
S26032	3/8	12	34	9				20		24
S26037	3/8	17	38	9				20		31
S26022	1/2	12	35,5	10				25		33
S26027	1/2	17	39,5	10				24		39

## S31

**RESCA PORTAGOMMA CONICA "L"**  
 TAPERED ELBOW RUBBER HOSE END  
 DOUILLE CONNELEE CONIQUE L  
 WINKELTÜLLE MIT AUßENGEWINDE



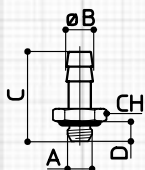
CODICE	A	B	C	D	E	F	G	CH	CH1	Gr
S31860	1/8	6	18,5	22,5				8		10
S31806	1/8	6	23	22,5				8		12
S31460	1/4	6	23	23				9		17
S31870	1/8	7	18,5	22,5				8		9
S31807	1/8	7	23	22,5				8		11
S31470	1/4	7	23	23				9		16



## S27

**RESCA PORTAGOMMA METRICA + O-RING**  
 METRIC RUBBER HOSE END + O-RING  
 DOUILLE CONNELEE METRIQUE + O-RING  
 GERADER EINSCHRAUBVERBINDER + O-RING

CODICE	A	B	C	D	E	F	G	CH	CH1	Gr
<b>S27538</b>	M5	3	17	4				8		3
<b>S27548</b>	M5	4	18	4				8		3

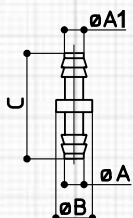


**RESCA IN OTTONE NON NICHELATO**  
 HOSE END IN NOT NICKEL-PLATED BRASS  
 DOUILLE CONNELEE EN LAITON NON NICKELÉ  
 TÜLLE AUS MESSING, BLANK

## S28

**RESCA PORTAGOMMA INTERMEDIA**  
 INTERMEDIATE RUBBER HOSE END  
 DOUILLE CONNELEE UNION  
 GERADER VERBINDER

CODICE	A	A1	B	C	D	E	F	CH	CH1	Gr
<b>S28220</b>	2	2	5	22						2
<b>S28320</b>	3	2	6	22						2
<b>S28330</b>	3	3	6	22						2
<b>S28430</b>	4	3	7	23						2
<b>S28440</b>	4	4	7	24						3
<b>S28640</b>	6	4	9	24						3
<b>S28660</b>	6	6	9	24						3

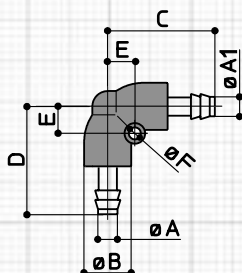


**RESCA IN OTTONE NON NICHELATO**  
 HOSE END IN NOT NICKEL-PLATED BRASS  
 DOUILLE CONNELEE EN LAITON NON NICKELÉ  
 TÜLLE AUS MESSING, BLANK

## S29

**RESCA PORTAGOMMA INTERMEDIA "L"**  
 INTERMEDIATE ELBOW RUBBER HOSE END  
 DOUILLE CONNELEE EQUERRE  
 WINKEL- VERBINDER

CODICE	A	A1	B	C	D	E	F	CH	CH1	Gr
<b>S29220</b>	2	2	10	22	22	5,7	2,7			4
<b>S29330</b>	3	3	10	22	22	5,7	2,7			5
<b>S29440</b>	4	4	10	22	22	5,7	2,7			6
<b>S29660</b>	6	6	10	22	22	5,7	2,7			7

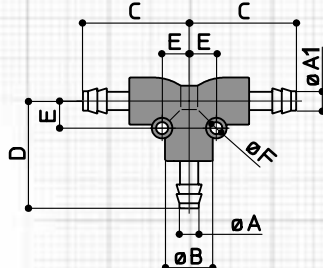


**RESCA IN OTTONE NON NICHELATO**  
 HOSE END IN NOT NICKEL-PLATED BRASS  
 DOUILLE CONNELEE EN LAITON NON NICKELÉ  
 TÜLLE AUS MESSING, BLANK

## S30

**RESCA PORTAGOMMA INTERMEDIA "T"**  
 INTERMEDIATE TEE RUBBER HOSE END  
 DOUILLE CONNELEE "T"  
 T- VERBINDER

CODICE	A	A1	B	C	D	E	F	CH	CH1	Gr
<b>S30220</b>	2	2	10	22	22	5,7	2,7			7
<b>S30330</b>	3	3	10	22	22	5,7	2,7			8
<b>S30440</b>	4	4	10	22	22	5,7	2,7			10
<b>S30660</b>	6	6	10	22	22	5,7	2,7			11



**RESCA IN OTTONE NON NICHELATO**  
 HOSE END IN NOT NICKEL-PLATED BRASS  
 DOUILLE CONNELEE EN LAITON NON NICKELÉ  
 TÜLLE AUS MESSING, BLANK

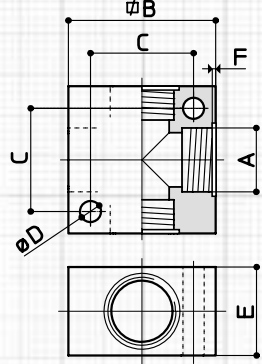


## S22

**RIPARTITORE 4 VIE**  
4WAYS MULTIPLE COLLECTOR  
REPARTITEUR 4 VOIES  
4-WEGE VERTEILER BLOCK



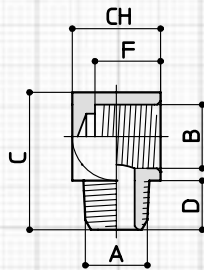
ALLUMINIO  
WITH WASHER  
AVEC RONDELLE  
MIT DICHRING



CODICE	A	B	C	D	E	F	G	CH	CH1	Gr
<b>S22080</b>	1/8	25	17	4,5	15	0,5				18
<b>S22040</b>	1/4	30	23	4,5	18	/				28
<b>S22340</b>	1/4	40	26	5,5	20	0,5				37
<b>S22030</b>	3/8	50	34	5,5	25	0,5				51
<b>S22020</b>	1/2	50	34	5,5	30	0,5				53

## S23

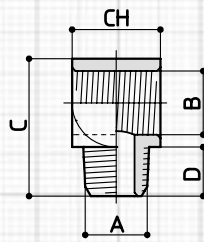
**RACCORDO "L" M.F.**  
ELBOW FITTING M.F.  
RACCORD "L" M.F.  
L-EIN-UND AUFSCRAUBUNG



CODICE	A	B	C	D	E	F	G	CH	CH1	Gr
<b>S23550</b>	M5	M5	16	5		5		9		7
<b>S23880</b>	1/8	1/8	22	8		9		14		18
<b>S23440</b>	1/4	1/4	28	10		10		18		38

## S24

**RACCORDO "T" M.F.**  
TEE FITTING M.F.  
RACCORD "T" M.F.  
T-EIN-UND AUFSCRAUBUNG

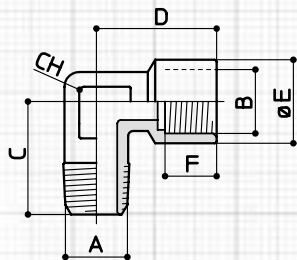


CODICE	A	B	C	D	E	F	G	CH	CH1	Gr
<b>S24880</b>	1/8	1/8	22	8				14		16
<b>S24440</b>	1/4	1/4	28	10				18		34



## Z30

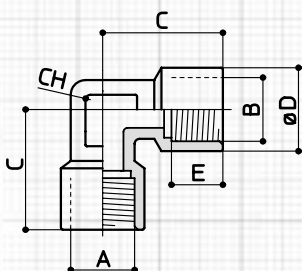
**RACCORDO "L" M.F.**  
ELBOW FITTING M.F.  
RACCORD "L" M.F.  
SCHRAUB-MUFFEN-WINKEL



CODICE	A	B	C	D	E	F	G	CH	CH1	Gr
Z30550	M5	M5	11,5	11	8,5	5		9		7
Z30880	1/8	1/8	18,5	21	13	8		11		16
Z30440	1/4	1/4	23	24,5	17	10		13		26
Z30330	3/8	3/8	26	28	21	11		17		53
Z30220	1/2	1/2	31,5	35	26,5	14		20		94
Z30770	3/4	3/4	33	36,5	32	16,5		25		192
Z30110	1"	1"	45	39	39	19		30		207

## Z31

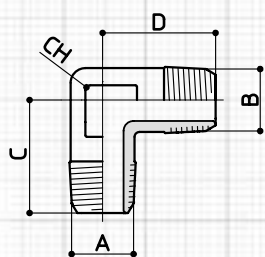
**RACCORDO "L" F.F.**  
ELBOW FITTING F.F.  
RACCORD "L" F.F.  
WINKEL-MUFFENANSCHLUSS



CODICE	A	B	C	D	E	F	G	CH	CH1	Gr
Z31550	M5	M5	11	8,5	5			9		7
Z31880	1/8	1/8	21	13	8			11		19
Z31440	1/4	1/4	24,5	17	10			13		32
Z31330	3/8	3/8	28	21	11			17		49
Z31220	1/2	1/2	35	26,5	14			20		116
Z31770	3/4	3/4	36,5	32	16,5			25		136
Z31110	1"	1"	45	39	19			30		233

## Z32

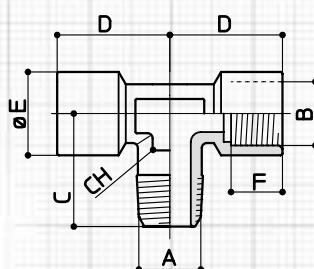
**RACCORDO "L" M.M.**  
ELBOW FITTING M.M.  
RACCORD "L" M.M.  
WINKEL-SCHRAUBANSCHLUSS



CODICE	A	B	C	D	E	F	G	CH	CH1	Gr
Z32550	M5	M5	11,5	11,5				9		8
Z32880	1/8	1/8	18,5	18,5				11		13
Z32440	1/4	1/4	23	23				13		23
Z32330	3/8	3/8	26	26				17		48
Z32220	1/2	1/2	31,5	31,5				20		74
Z32770	3/4	3/4	33	33				25		102
Z32110	1"	1"	39	39				30		174

## Z33

**RACCORDO "T" CENTR. F.M.F.**  
TEE CENTRAL FITTING F.M.F.  
RACCORD "T" CENTR. F.M.F.  
T-EINSCHRAUB-DOPPELMUFFENANSCHLUSS

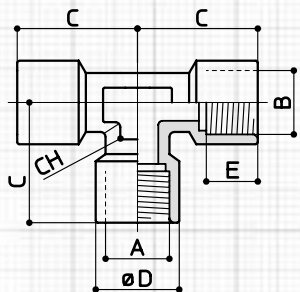


CODICE	A	B	C	D	E	F	G	CH	CH1	Gr
Z33050	M5	M5	11,5	11	8,5	5		9		13
Z33080	1/8	1/8	18,5	21	13	8		11		24
Z33040	1/4	1/4	23	24,5	17	10		13		40
Z33030	3/8	3/8	26	28	21	11		17		63
Z33020	1/2	1/2	31,5	35	26,5	14		20		143
Z33070	3/4	3/4	33	36,5	32	16,5		25		178
Z33010	1"	1"	39	45	39	19		30		295



## Z34

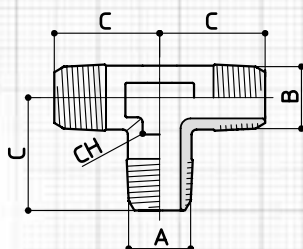
**RACCORDO "T" F.F.F.**  
TEE FITTING F.F.F.  
RACCORD "T" F.F.F.  
T-SCHRAUBANSCHLUSS INNENGEWINDE



CODICE	A	B	C	D	E	F	G	CH	CH1	Gr
Z34050	M5	M5	11	8,5	5			9		19
Z34080	1/8	1/8	21	13	8			11		29
Z34040	1/4	1/4	24,5	17	10			13		46
Z34030	3/8	3/8	28	21	11			17		72
Z34020	1/2	1/2	34,5	26,5	14			20		163
Z34070	3/4	3/4	36,5	32	16,5			25		198
Z34010	1"	1"	45	39	19			30		320

## Z35

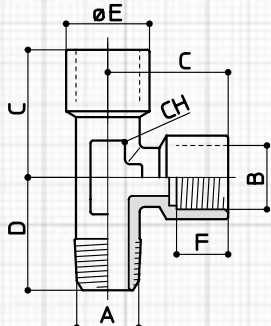
**RACCORDO "T" M.M.M.**  
TEE FITTING M.M.M.  
RACCORD "T" M.M.M.  
T-SCHRAUBANSCHLUSS AUSSENGEWINDE



CODICE	A	B	C	D	E	F	G	CH	CH1	Gr
Z35080	1/8	1/8	18,5					11		17
Z35040	1/4	1/4	23					13		30
Z35030	3/8	3/8	26					17		50
Z35020	1/2	1/2	31,5					20		96
Z35070	3/4	3/4	33					25		133
Z35010	1"	1"	39					30		237

## Z36

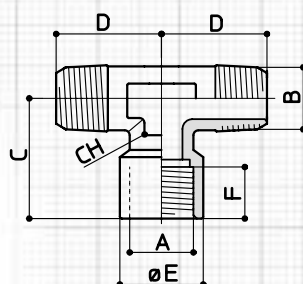
**RACCORDO "T" LATERALE M.F.F.**  
LATERAL TEE FITTING M.F.F.  
RACCORD "T" LATER M.F.F.  
L-SCHRAUB-DOPPELMUFFENANSCHLUSS (T-Körper)



CODICE	A	B	C	D	E	F	G	CH	CH1	Gr
Z36050	M5	M5	11	11,5	8,5	5		9		15
Z36080	1/8	1/8	21	18	13	8		11		26
Z36040	1/4	1/4	24,5	23,5	17	10		13		41
Z36030	3/8	3/8	26	26	21	11		17		63
Z36020	1/2	1/2	31	31	26,5	14		20		139
Z36070	3/4	3/4	36,5	33	32	16,5		25		178
Z36010	1"	1"	45	39	39	19		30		289

## Z37

**RACCORDO "T" M.F.M.**  
TEE FITTING M.F.M.  
RACCORD "T" M.F.M.  
T-AUFSCRAUB-ANSCHLUSS MIT 2 AUSSENGEWINDE

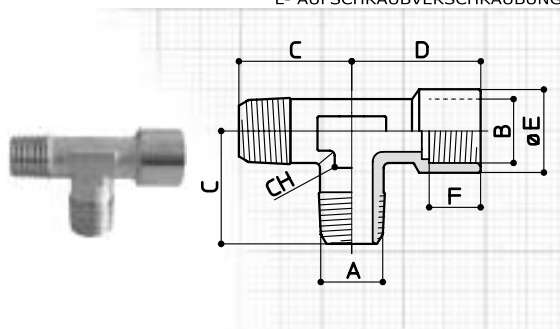


CODICE	A	B	C	D	E	F	G	CH	CH1	Gr
Z37080	1/8	1/8	21	18,5	13	8		11		23
Z37040	1/4	1/4	24,5	23	17	10		13		46
Z37030	3/8	3/8	28	26	21	11		17		68
Z37020	1/2	1/2	35	31,5	26,5	14		20		116
Z37070	3/4	3/4	36,5	33	32	16,5		25		157
Z37010	1"	1"	45	39	39	19		30		263



## Z42

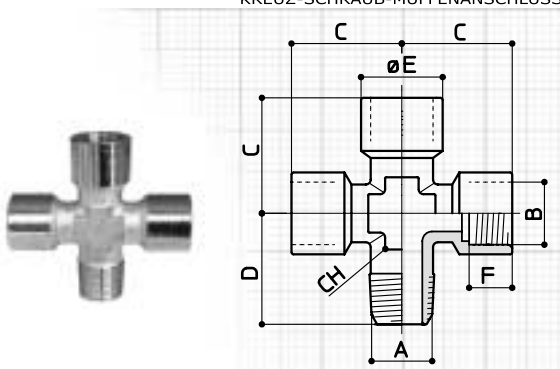
**RACCORDO "T" M.F.F.**  
TEE FITTING M.F.F.  
RACCORD "T" M.F.F.  
L- AUFSCHRAUBVERSCHRAUBUNG



CODICE	A	B	C	D	E	F	G	CH	CH1	Gr
Z42080	1/8	1/8	18,5	20	13	8		10		16
Z42040	1/4	1/4	23,5	25,5	17	10		13		26
Z42030	3/8	3/8	26	28	21	11		17		53
Z42020	1/2	1/2	31	33,5	26,5	14		20		94
Z42070	3/4	3/4	33	36,5	32	16,5		25		153
Z42010	1"	1"	39	45	39	19		30		270

## Z38

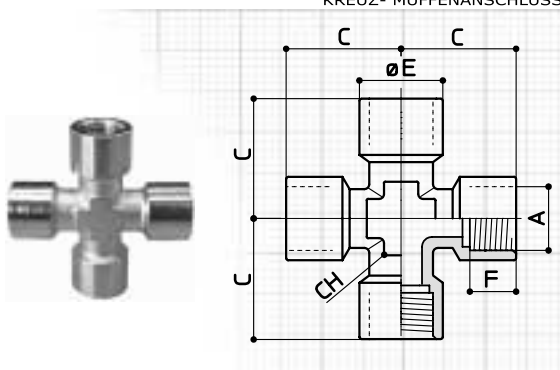
**RACCORDO "X" M.F.F.F.**  
CROSS FITTING M.F.F.F.  
RACCORD EN CROIX M.F.F.F.  
KREUZ-SCHRAUB-MUFFENANSCHLUSS



CODICE	A	B	C	D	E	F	G	CH	CH1	Gr
Z38080	1/8	1/8	21	18	13	8		11		36
Z38040	1/4	1/4	24,5	23,5	17	10		13		66
Z38030	3/8	3/8	28	26	21	11		17		100
Z38020	1/2	1/2	33,5	31	26,5	14		21		166

## Z41

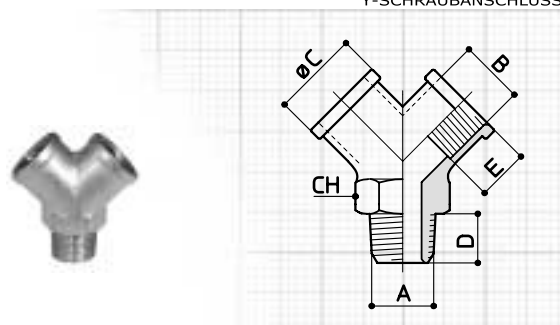
**RACCORDO "X" F.F.F.F.**  
CROSS FITTING F.F.F.F.  
RACCORD EN CROIX F.F.F.F.  
KREUZ-SCHRAUBANSCHLUSS



CODICE	A	B	C	D	E	F	G	CH	CH1	Gr
Z41080	1/8		21		13	8		10		37
Z41040	1/4		25,5		17	11		13		75
Z41030	3/8		28		21	11,5		17		108
Z41020	1/2		33,5		26,5	14		21		188

## Z39

**RACCORDO "Y" F.M.F.F.**  
Y FITTING F.M.F.F.  
RACCORD "Y" F.M.F.F.  
Y-SCHRAUBANSCHLUSS

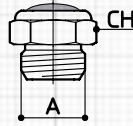


CODICE	A	B	C	D	E	F	G	CH	CH1	Gr
Z39880	1/8	1/8	13,5	8	8			11		21
Z39440	1/4	1/4	17,5	10	10			13		39
Z39330	3/8	3/8	21	11	11			17		56
Z39220	1/2	1/2	26	14	14			20		104



## SFE

**SILENZIATORE IN METALLO**  
METAL SILENCERS  
SILENCIEUX  
SCHALLDÄMPFER



CODICE	A	B	C	D	E	F	G	CH	CH1	Gr
<b>SFE050</b>	M5							8		
<b>SFE180</b>	1/8							13		
<b>SFE140</b>	1/4							16		
<b>SFE380</b>	3/8							19		
<b>SFE120</b>	1/2							24		
<b>SFE340</b>	3/4							30		
<b>SFE100</b>	1"							36		

## SCQ

**SILENZIATORE IN METALLO**  
METAL SILENCERS  
SILENCIEUX  
SCHALLDÄMPFER



CODICE	A	B	C	D	E	F	G	CH	CH1	Gr
<b>SCQ180</b>	1/8									
<b>SCQ140</b>	1/4									
<b>SCQ380</b>	3/8									
<b>SCQ120</b>	1/2									
<b>SCQ340</b>	3/4									
<b>SCQ100</b>	1"									

## SCT

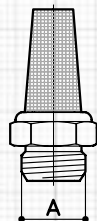
**SILENZIATORE IN METALLO**  
METAL SILENCERS  
SILENCIEUX  
SCHALLDÄMPFER



CODICE	A	B	C	D	E	F	G	CH	CH1	Gr
<b>SCT050</b>	M5									
<b>SCT180</b>	1/8									
<b>SCT140</b>	1/4									
<b>SCT380</b>	3/8									
<b>SCT120</b>	1/2									
<b>SCT340</b>	3/4									
<b>SCT100</b>	1"									

## SCE

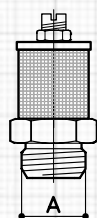
**SILENZIATORE IN METALLO**  
METAL SILENCERS  
SILENCIEUX  
SCHALLDÄMPFER



CODICE	A	B	C	D	E	F	G	CH	CH1	Gr
<b>SCE050</b>	M5									
<b>SCE180</b>	1/8									
<b>SCE140</b>	1/4									
<b>SCE380</b>	3/8									
<b>SCE120</b>	1/2									
<b>SCE340</b>	3/4									
<b>SCE100</b>	1"									

## SVL

**SILENZIATORE IN METALLO**  
METAL SILENCERS  
SILENCIEUX  
SCHALLDÄMPFER



CODICE	A	B	C	D	E	F	G	CH	CH1	Gr
<b>SVL180</b>	1/8									
<b>SVL140</b>	1/4									
<b>SVL380</b>	3/8									
<b>SVL120</b>	1/2									
<b>SVL340</b>	3/4									
<b>SVL100</b>	1"									



## SVE

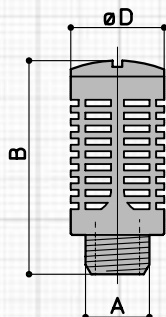
**SILENZIATORE IN METALLO**  
METAL SILENCERS  
SILENCIEUX  
SCHALLDÄMPFER



CODICE	A	B	C	D	E	F	G	CH	CH1	Gr
<b>SVE180</b>	1/8									
<b>SVE140</b>	1/4									
<b>SVE380</b>	3/8									
<b>SVE120</b>	1/2									
<b>SVE340</b>	3/4									
<b>SVE100</b>	1"									

## SPL

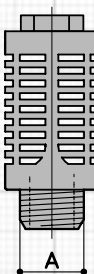
**SILENZIATORE IN PLASTICA**  
METAL SILENCERS  
SILENCIEUX  
SCHALLDÄMPFER



CODICE	A	B	C	D	E	F	G	CH	CH1	Gr
<b>SPL180</b>	1/8	32,5		15						
<b>SPL140</b>	1/4	43		19,5						
<b>SPL380</b>	3/8	58		24,5						
<b>SPL120</b>	1/2	58		24,5						
<b>SPL340</b>	3/4	115		48						
<b>SPL100</b>	1"	115		48						

## SPF

**SILENZIATORE IN PLASTICA**  
METAL SILENCERS  
SILENCIEUX  
SCHALLDÄMPFER



CODICE	A	B	C	D	E	F	G	CH	CH1	Gr
<b>SPF180</b>	1/8									
<b>SPF140</b>	1/4									
<b>SPF380</b>	3/8									
<b>SPF120</b>	1/2									